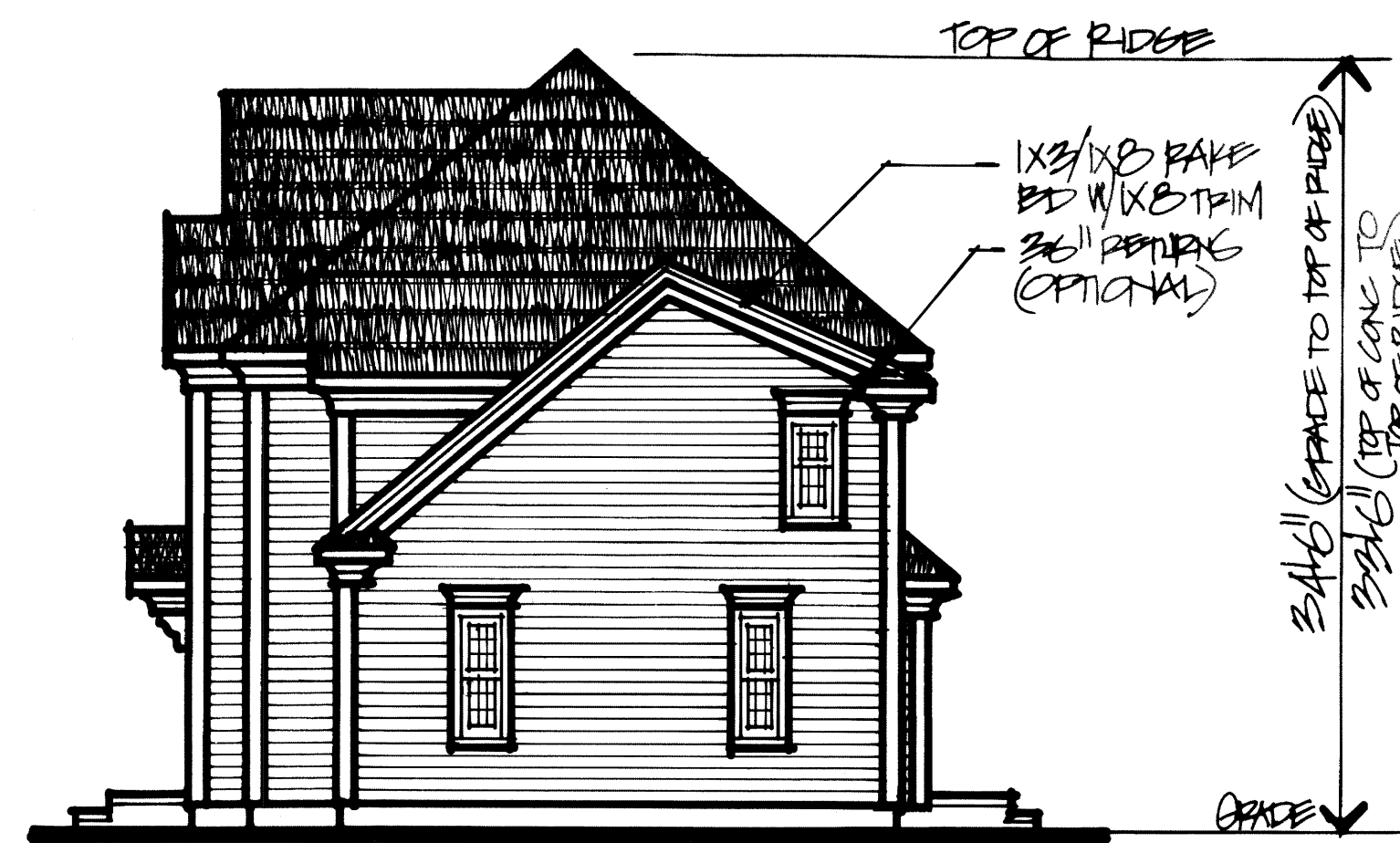




FRONT ELEVATION

$\frac{1}{4}'' = 1'-0''$

SHOWN W/OPTIONAL WINDOW HEADERS, SHUTTERS, AND TRIM



RIGHT SIDE ELEVATION

$\frac{1}{8}'' = 1'-0''$



REAR ELEVATION

$\frac{1}{8}'' = 1'-0''$



LEFT SIDE ELEVATION

$\frac{1}{8}'' = 1'-0''$

3061 SF (W/STORAGE)
2649 SF (W/O STORAGE)

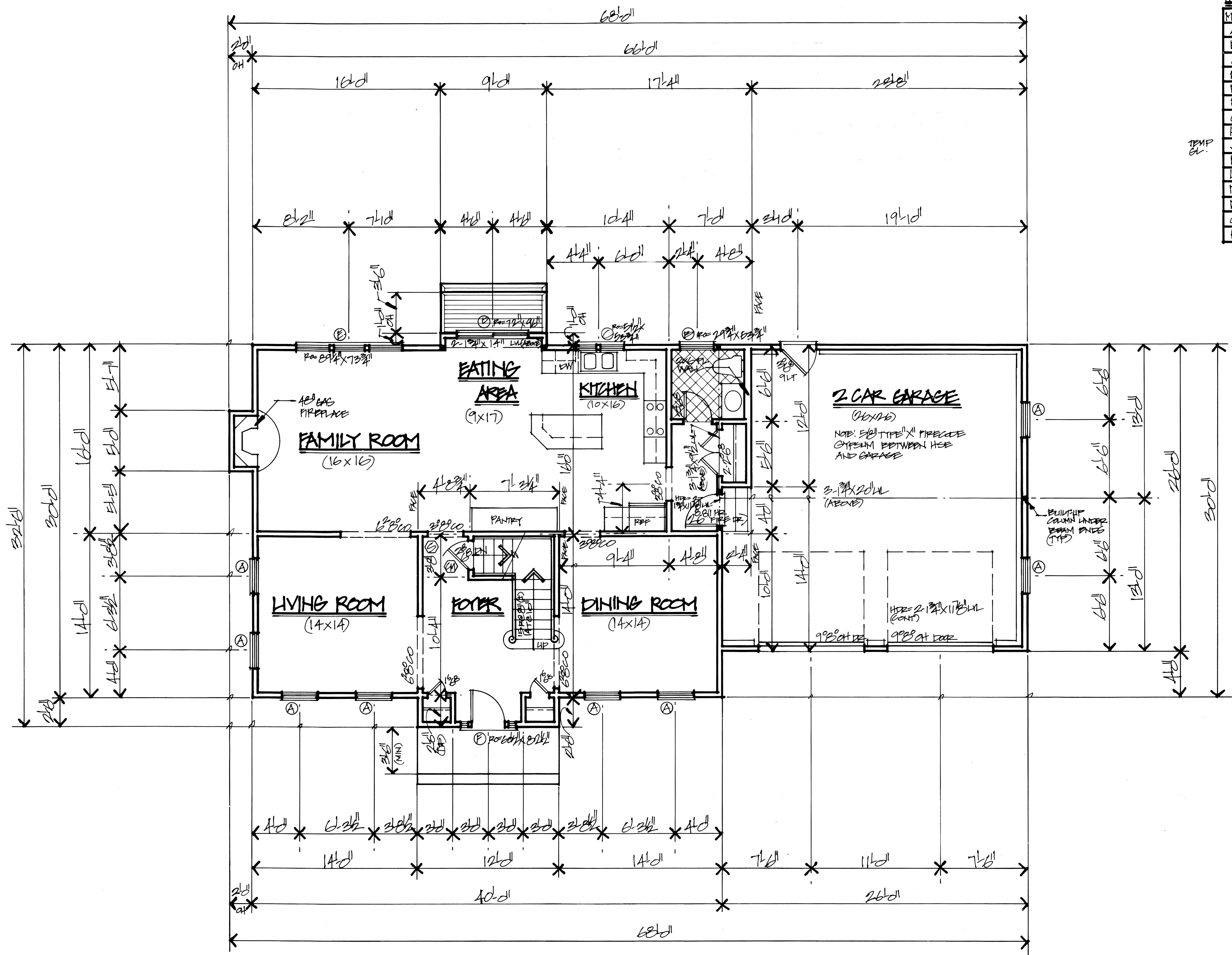
SHANE STRUCTURES
 P.O. Box 81 · Hopkinton, MA 01748 · Phone/Fax: 888-522-7129
THE BARBARY RESIDENCE
 1 OF 9
 ELEVATIONS
 DATE: JAN 2012 BY: SUAT REEDS

2ND FL. HUR. HTS. 6'10"
 1ST FL. HUR. HTS. 8'0"
 VERIFY RGS W/ MANUFACTURER

WINDOW AND DOOR SCHEDULE

MARK	MFG	TYPE	NUMBER	ROUGH OPENING	HTZ	REMARKS	CITY
A	PARA	DH	2971	29 3/4" X 71 3/4"	2'-2 3/4"		3
B		DH	2983	29 3/4" X 60 3/4"	2'-2 3/4"		1
C		CASMENT	2982-1	51 1/2" X 60 3/4"	2'-2 3/4"	W/ 2" FLY	1
D		CASSET	6080	72" X 96"	2'-2 3/4"	W/ 2" FLY	1
E		DH	2971-2	29 3/4" X 71 3/4"	2'-2 3/4"	W/ 2" FLY	1
F		FRONT PR	2983-10A	60 3/4" X 81 1/2"	2'-2 3/4"	W/ 2" FLY	1
G		DH	2965	29 3/4" X 60 3/4"	2'-2 3/4"		3
H		DH	2962-2	29 3/4" X 60 3/4"	2'-2 3/4"	W/ 2" FLY	2
J		CASMENT	2947-2	29 3/4" X 47 3/4"	2'-2 3/4"	W/ 2" FLY	1
K		DH	2947	29 3/4" X 47 3/4"	2'-2 3/4"		2
L							
M							
N							
O							
P							

TEMP GL.



NOTES:

- NEM PORTAL FRAME AT WALLS LESS THAN 2'-0"
- HURRICANE CHES REQ'D.
- VENT ALL BATHS TO EXTERIOR
- MIN. 1/2" FLY SHEATHING APPLIED TO 2x4 (OR) SINKS @ 12" O.C. (VERTICAL) W/A MIN. 4" WIDE PANEL @ EACH CORNER. 2x4 NAILS @ 6" O.C. FOR EDGES AND 12" O.C. IN THE FIELD (TYPICAL NAILING PATTERN THROUGHOUT ENT. SHEATHED EXTERIOR) MAXIMUM HORIZONTAL DISTANCE BETWEEN PANELS = 2'-0" O.C.
- 3" O.C. NAILING PATTERN AT BOTH SIDES AND JACKS FOR ALL WINDOW AND DOOR OPENINGS.
- WIND SPEED 100 MPH
- GRAND SNOW LOAD 40 PSF
- EXPOSURE B LIVE LOADS 40 PSF 1ST FL
30 PSF 2ND FL
20 PSF ATTIC
- THIS PLAN MEETS THE 2ND EDITION OF THE MASS STATE BUILDING CODE
- RECOMMENDED FASTENERS TRUSSOR ENGINEERED WOOD FASTENERS AND BOSSITCH HURRICANE NAILS

FIRST FLOOR PLAN

1/4" = 1'-0"

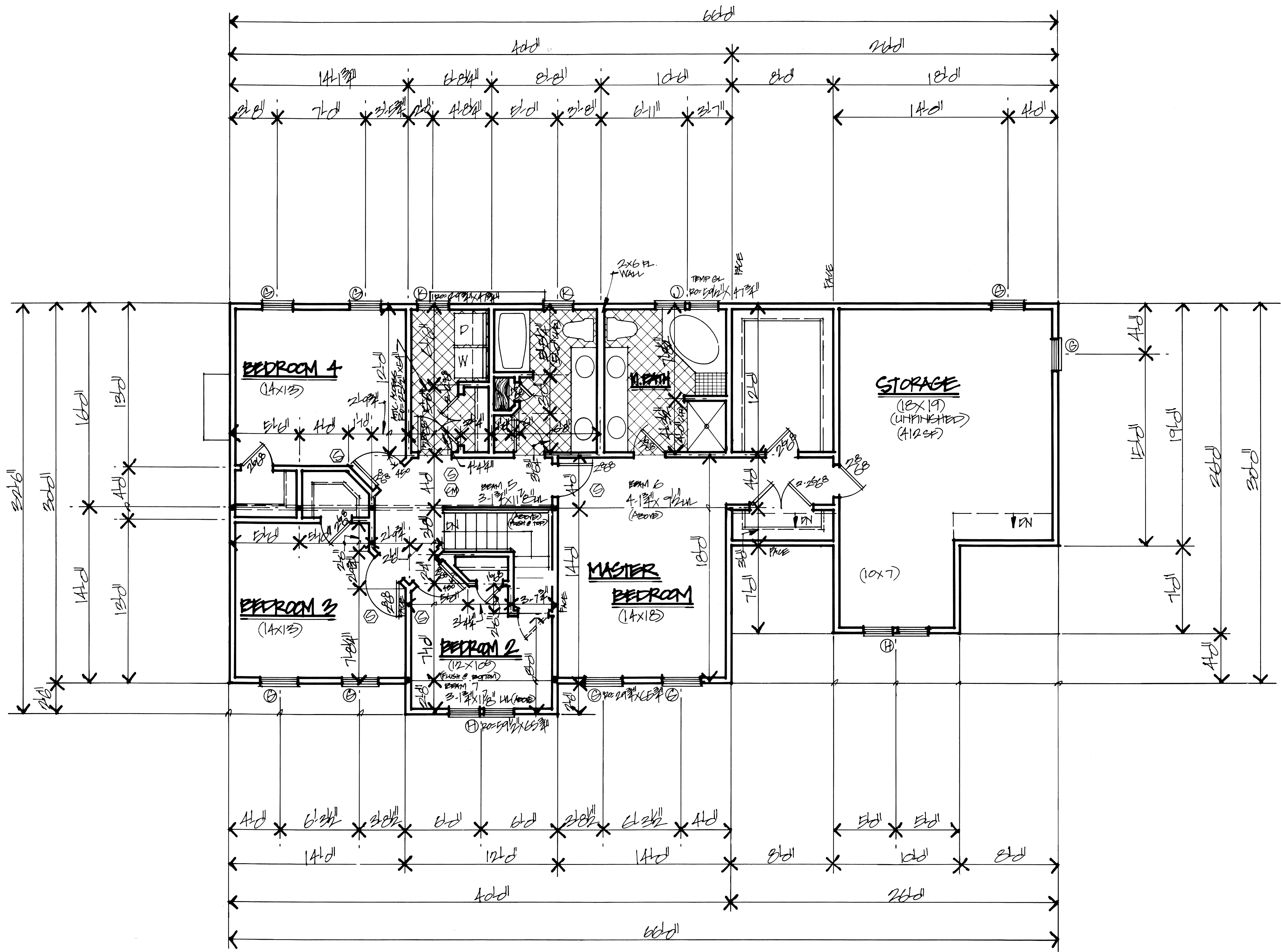
1267 SF

SHANE STRUCTURES
 P.O. Box 81 • Hopkinton, MA 01748 • Phone/Fax: 888-522-7129

THE BARBARY RESIDENCE
 2 OF 9

FIRST FLOOR PLAN 1/4" = 1'-0"
 DATE: JAN, 2012 BY: GUY PROFFER

- ⊙ SMOKE DETECTOR
- ⊕ HEAT DETECTOR
- ⊖ CARBON MONOXIDE DETECTOR



BEAM 5 SPAN=15'-0" (MAX) 3-1 3/4" x 11 7/8" LVL
 SPL. JOISTS TL=600 TL=9'4" > 600 ✓
 LL=450 LL=6'4" > 450 ✓

BEAM 6 SPAN=14'-0" 4-1 3/4" x 11 7/8" LVL
 SPL. JOISTS TL=600 TL=7'9" > 600 ✓
 LL=450 LL=5'4" > 450 ✓

BEAM 7 SPAN=10'-0" 3-1 3/4" x 11 7/8" LVL
 SPL. JOISTS TL=530 TL=17'5" > 13'9.5" ✓
 LL=250 LL=17'5" > 11'0" ✓

CG JOISTS TL=165 TL=110
 RAFTERS TL=900 T/TL=13'9.5" ✓
 LL=750 T/LL=11'0" ✓

SECOND FLOOR PLAN 1/4"=1'-0"

1794 SF (W/STORAGE)
 1382 SF (W/O STORAGE)

SHANE STRUCTURES
 P.O. Box 81 · Hopkinton, MA 01748 · Phone/Fax: 888-522-7129

THE BARBARY RESIDENCE
 3 of 9

SECOND FLOOR PLAN 1/4"=1'-0"
 DATE: JAN, 2012 BY: GOTT ROBERTS

SMOKE DETECTOR
 CARBON MONOXIDE DETECTOR